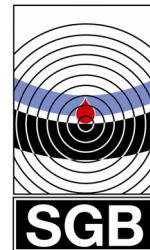


# Leak detection technology

*For a clean and protected environment*

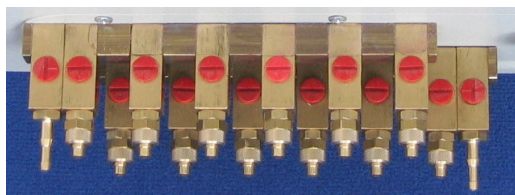


**New**

## Overpressure leak detector DL 330 ELC FC with integrated dry filter control



Indicating unit and leak detector



Manifold for a quick and easy function test of the system without access to the tank. The connection for tubing is in different type's available (e.g. quick ferrule union.)



Indicating unit with red alarm lights for dry filter change, tank- and pipeline leak.



Example: Tank adaptors for Polyamid hose and quick ferrule

for the monitoring up to 6 double walled tanks. With integrated drying Filter Sensor to avoid condensation and corrosion in the interstitial space. The sensor will indicate an unacceptable level of humidity due to saturated drying material. By this, the notice for changing the dry filter material will be guaranteed and a main important contribution for a long term run of the tank is done.

A sensor is integrated in the suction line of the pump between pump and dry filter to measure the moisture of the air intake. The sensor registers the increase in relative humidity when the desiccant is spent. The optical and audible alarm is triggered together with the potential-free message when the drying capacity is insufficient. The visual indication consists of alternate flashing of the two red alarm LED's.

The leak detector ELC is the optimal alternative, if high integration and low use of space is required. The monitoring system for tanks and pipes may be integrated into one system. The working unit can be installed outside without additional requirements. The indication unit offers the optical and audible alarm inclusive a dry relay contact for alarm transmitting.

- Small, space saving design
- Little installation efforts
- Weather proof design of the leak detector
- Separate alarm indication for tanks and pipes
- Dry filter control FC

Every leak in one of the walls will be detected by an optical and audible alarm before product enters the environment. Integrated valves allow for quick localisation of a leaking tank.

A supreme class I leak detection system in accordance to the European standard EN 13 160.

### For the monitoring of:

Double walled cylindrical underground tanks with a test pressure of the interstitial space of minimum 500 mbar (e.g. in accordance with DIN 6608/2)

### Liquids to be monitored:

- Water polluting liquids, e.g. petrol, diesel, heating oil, lye, acid

Approvals: Germany: Z-65.23-409

Alarm pressure	Operating pressure	max. Pressure on tank bottom
> 330 mbar	< 410 mbar	300 mbar

Sold by:

**SGB GmbH**

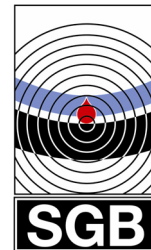
Hofstr. 10  
post box: 21 07 41

D-57076 Siegen  
D-57031 Siegen

Tel.: + 49 / (0) 271 / 48964-0  
Fax: + 49 / (0) 271 / 48964-6  
<http://www.sgb.de>  
E-mail: [sgb@sgb.de](mailto:sgb@sgb.de)

# Leak detection technology

*For a clean and protected environment*



## Overpressure leak detector DL 330 ELC FC

### Monitoring principle:

The pump in the leak detector creates a fixed operational overpressure in the interstitial space.

In case of a leak, the compressed air will escape through the leak. This prevents product or groundwater entering the interstitial space.

Any minor unavoidable untightness is compensated by the system automatically.

If the volume flow of air escaping from the interstitial space is higher than the limited volume flow of the pressure pump, the pressure will drop to the alarm pressure.

An optical and audible alarm will be released.

The compressed air in the interstitial space is dried by the dry filter mounted to the leak detector. Therefore a condensation of water in the interstitial space is prevented.

An overpressure valve avoids the occurrence of an inadmissible overpressure in the interstitial space.

### Installation advice:

The leak detector shall not be installed in hazardous classified areas.

Outside closed and dry rooms, the indicating unit has to be installed in a suitable protection box.

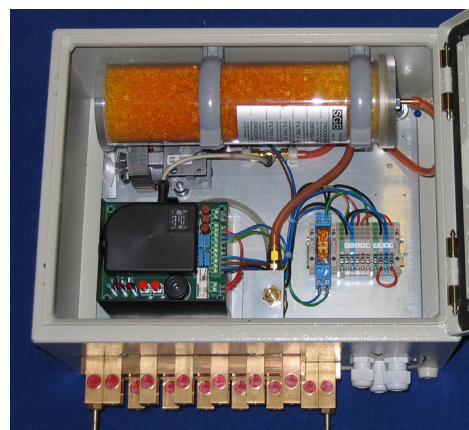
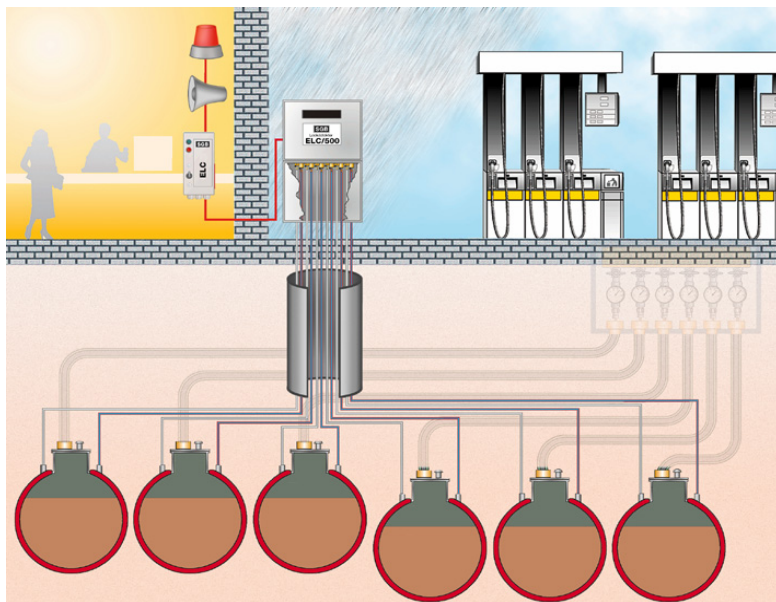
Coloured, flexible or rigid tubes are to be used as a connection between leak detector and interstitial space.

Useful fittings on the leak detector guarantee a quick and safe examination of the functions.

Additional alarm signal units can be connected directly to the leak detector. Dry relay contacts for alarm transmitting are included.

When operating, installing and commissioning the leak detector DL 330 ELC FC, the conditions laid down in the approvals for the leak detector, tanks and linings are to be observed.

All works shall be carried out by a qualified person.



Helpful accessories allow an easy and quick test of the system without entering the manhole chamber.

**Please contact us, we are happy to be of assistance.**

Subject to changes. Photos and dimensions are not binding for the extend of delivery.

**SGB GmbH**  
Hofstr. 10  
Postfach: 21 07 41  
Germany

D-57076 Siegen  
D-57031 Siegen

Tel.: + 49 / (0) 271 / 48964-0  
Fax: + 49 / (0) 271 / 48964-6  
<http://www.sgb.de>  
E-mail: [sgb@sgb.de](mailto:sgb@sgb.de)